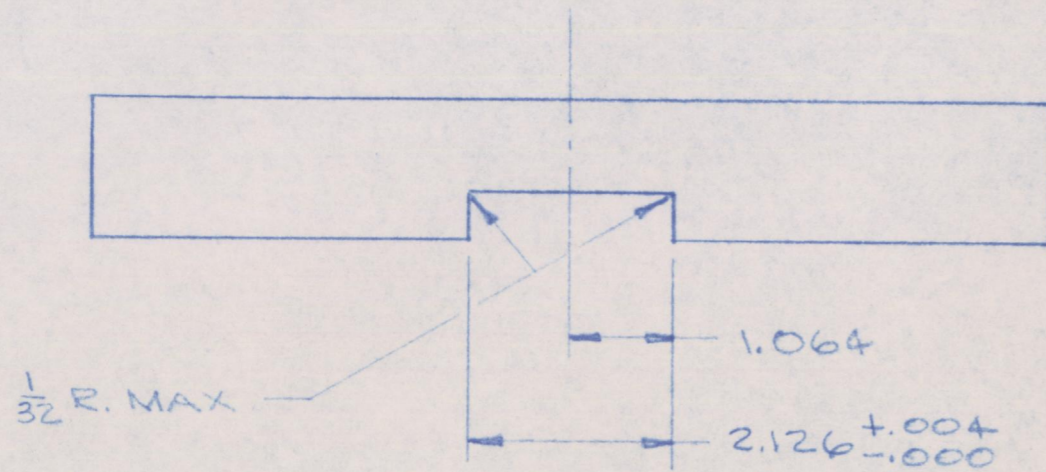
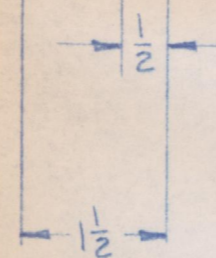


THIS SURFACE TO BE
FLAT WITHIN .005 T.I.R.



MAT'L: 4140 OR 4340
ALLOY STEEL
HEAT TREAT: R_c 28-32

REF. GENERAL MILLS
DWG 533025



McCARTNEY MFG. CO.
BAXTER SPRINGS KANSAS

NEXT ASSY: D-320 & D-321

POLE END
TRACK SUPPORT

UNLESS OTHERWISE SPECIFIED
TOLERANCE: FRACTIONS $\pm 1/64$, DECIMALS $\pm .005$
BREAK SHARP CORNERS AND EDGES .010 R ALL OVER.
SURFACE FINISH $\frac{125}{\sqrt{R}}$ ALL OVER.

REV. Δ	$\frac{13}{16}$ C BORE WAS $\frac{13}{32}$ C BORE	5-23-63	REF. No. Δ
REV. Δ			REF. No. Δ
REV. Δ			REF. No. Δ

SCALE HALF SIZE	DATE 10-8-63
MATL NOTED	HEAT TREAT NOTED
CATALOG No.	DWG. LEP
	APPRD.
	DWG. No. C-554